

# Test Sieves

Guaranteed to meet  
International Standards



## Shakers and Accessories



**Impact Test Equipment**

The only UK sieve manufacturer with UKAS  
accreditation for the calibration of test sieves



## Impact Test Sieves for Quality and Value

Impact test sieves are manufactured in Ayrshire, Scotland to the highest standards. Our seamless frames ensure a precise fit and superior quality.

Impact has been manufacturing test sieves in Scotland for the civil engineering, chemical, pharmaceutical, agricultural and other industries since the early 1990s. Here at Impact we carry a large stockholding to enable us to supply thousands of sieves and other products to your requirements.

We listen to our customers and continually evaluate our performance to provide a better and more efficient service. Impact is constantly looking at ways in which we can improve the product and have an ongoing development program to bring new products to the market that will comply to the latest international standards.



## Impact Test Equipment Ltd UKAS accredited calibration laboratory, No. 0419.

There is no higher guarantee of quality and compliance than UKAS Certification. Ideal as a master reference when calibrating your working sieves.

At Impact we can calibrate any make of sieve, including those from other manufacturers and issue it with a UKAS certificate. Once a sieve is calibrated it is an accurate and traceable measuring device.

Impact uses a top of the range Optical Projector to ensure the quality and precision of every sieve produced. It is regularly calibrated to National Standards.

## European Standard Sieves to ISO 3310/2 and BS 410/2

### Square Hole Perforated Plate

#### Frame diameters:

200, 250, 300, 315, 350, 400 and 400mm

#### Apertures:

from 4mm up to 125mm square hole perforated plate

#### Half Height Frames:

available in 200 and 300mm diameters

### Round Hole Perforated Plate

#### Frame diameters:

200 and 300mm

#### Apertures:

from 4mm up to 112mm round hole perforated plate

## European Standard Sieves to ISO 3310/1 and BS 410/1

### Woven Wire Mesh

#### Frame diameters:

200, 250, 300, 315, 350, 400 and 400mm

#### Apertures:

from 20 $\mu$ m up to 125mm woven wire mesh

#### Half Height Frames:

available in 200 and 300mm diameters

**Wet Washing Sieves****to ISO 3310/1****200mm Diameter****Depths:**

100mm and 200mm

**Apertures:**

63µm and 75µm woven wire mesh

**300mm Diameter****Depths:**

225mm and 300mm

**Apertures:**

63µm and 75µm woven wire mesh

**450mm Diameter****Depth:**

300mm

**Apertures:**

63µm, 75µm and 150µm woven wire mesh

**American Standard Sieves****to ASTM E11-04****Woven Wire Mesh****Frame diameters:**

8 inch and 12 inch

**Apertures:**

from 20µm (no. 635) up to 125mm (5 inch) woven wire mesh

**Half Height Frames:**

available in 8 inch and 12 inch diameters

**Wet Washing Sieves****to ASTM E11-04****8 inch Diameter****Depths:**

4 inch and 8 inch

**Apertures:**

63µm and 75µm woven wire mesh

**Shakers and Accessories**

Impact offers a range of complimentary sieving products.

- ◆ Analysers
- ◆ Balances
- ◆ Brushes
- ◆ Charts
- ◆ Glass Beads
- ◆ Racks
- ◆ Riffle Boxes
- ◆ Shakers
- ◆ Ultrasonic Baths

See overleaf for details of some of the shakers we offer.

Visit [www.impact-test.com](http://www.impact-test.com) for more information.

**Stainless Steel Grain Sieves****to ISO 5223****Slotted Plate****Frame diameter:**

200mm

**Apertures:**

from 1.0mm x 20.0mm up to 3.55mm x 20.0mm slotted plate

**Round Hole****Frame diameter:**

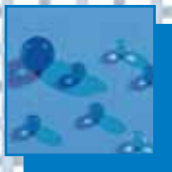
200mm

**Aperture:**

4.50mm round hole

**Half Height Frames:**

available in in all sizes above

**Lids and Receivers**

Lids, Receivers and Receiver/Separators are available for all sizes of Impact Sieves.



**Motorised**  
For 200, 250, 300 and 315mm, 8 and 12 inch diameter sieves.

**Electromagnetic**  
For 200, 250, 300 and 315mm, 8 and 12 inch diameter sieves.



**Electromagnetic**  
For 200, 250, 300, 315, 350 and 400mm, 8 and 12 inch diameter sieves.

**Electromagnetic**  
For 200, 250, 300, 315, 350, 400 and 450mm, 8, 12 and 18 inch diameter sieves.



**Hand Operated**  
For 200mm and 8 inch diameter sieves.

**Screen Shaker**  
High capacity for 457 x 660 x 75mm screen tray sieves.



**Impact Test Equipment Ltd**

Head Office  
Stevenston Industrial Estate  
Stevenston, Ayrshire, Scotland  
KA20 3LR

01294 602626 T  
01294 461168 F  
sales@impact-test.co.uk E

Southern Office  
The Old Court House  
20 Simpson Road, Fenny Stratford  
Milton Keynes, MK2 2DD

01908 366118 T  
01908 366255 F  
sales@impact-test.co.uk E

**Agent:**

[www.impact-test.co.uk](http://www.impact-test.co.uk)  
for civil engineering &  
construction test equipment

[www.impact-test.com](http://www.impact-test.com)  
for test sieves &  
related accessories